

Onna-son Restaurant Guide



① **Kijimuna きじむな** (Taco-rice, Omelet)



TEL 098-966-8389
475 Seragaki, Onna-son, Kunigami-gun Okinawa
沖縄県国頭郡恩納村瀬良垣 475



Seat 40, cash (Yen only),
Credit card ✕
Vegetarian ○ Allergy ○
English menu ✕
Open 11:00-18:00 (11:00-20:00
July, August, September)
Closed Wednesday
Average price ¥900~1000

② **Nakamura Soba なかむらそば**

(Okinawan noodle, local cuisine)



TEL 098-966-8005
1669-1 Seragaki, Onna-son, Kunigami-gun Okinawa
沖縄県国頭郡恩納村瀬良垣 1669-1



Seat 100, cash (Yen only),
Credit card ✕
Vegetarian ✕ Allergy ○
English menu ✕
Open 11:00-20:00
Open every day (Closed 1/1, 1/2)
Average price ¥600~700

③ **Umibudo 元祖海ぶどう**

(Sashimi, seaweed, sake, cocktail)



TEL 098-966-2588
6092-1 Onna, Onna-son, Kunigami-gun,
Okinawa
沖縄県国頭郡恩納村恩納 6092-1



Seat 80, cash (Yen only),
Credit card ✕
Vegetarian ✕ Allergy △
English menu ○
Open 11:00-23:00
Open everyday
Average price ¥2000~¥3000

④ **Oshokuji-dokoro Kayou お食事処かよう**

(Okinawan noodle, local cuisine)



TEL 098-966-8337
6235 onna Onna-son Kunigami-gun
Okinawa
沖縄県国頭郡恩納村恩納 6235



Seat 26, cash (Yen only),
Credit card ✕
Vegetarian ✕
Allergy △
(please call in advance)
English menu ✕
Open 11:00-15:00
Closed irregularly
Average price ¥800~¥1000

⑤ Onna-Matsuri 恩納まつり

Blue Seal Ice cream



Seat 150, Cash (Yen only)

Credit card ×

Vegetarian △ Allergy ×

English menu ○

OPEN 15:00~26:00

(Last Order 25:30)

Open everyday

Average price ¥2000~¥3000

(Okinawan dining, sake, awamori,
Okinawa Ice cream)

TEL 098-964-4321

507 Fuchaku Onna-son Kunigami-gun
Okinawa

沖縄県国頭郡恩納村富着 507



⑥ Nakaya なかや

(Okinawan dining, sake)



Seat 90, Cash (Yen only)

Credit card ×

Vegetarian △ Allergy ○

English menu ○

OPEN 17:00~23:00

Closed Wednesday

Average price ¥2000~¥3000

Okinawan live stage

TEL 098-965-4659

523-2 Maeganeku Onna-son Kunigami-
gun Okinawa prefecture

沖縄県国頭郡恩納村前兼久 523-2



⑦ Wankara-Wankarakaya 我空我空 (Okinawan dining, cocktail)



Seat 45, cash (Yen only)

Credit card ○

Vegetarian ○ Allergy △

English menu ○

OPEN 17:00~24:00 (LO 23:00)

Closed Wednesday

Average price ¥900~¥3000

TEL098-965-1017

258 Maekaneku- Onna-son Kunigami-
gun Okinawa

沖縄県国頭郡恩納村前兼久 258



⑧ Seaside Drive-in シーサイドドライブイン

(Steak, Sandwich, Okinawan cuisine)



Seat 100, cash (Yen only)

Credit card ×

Vegetarian × Allergy ○

English menu ×

OPEN 24hour

(2:00am~8:00am only take-away)

Open everyday

Average price ¥500~¥1200

TEL098-964-2272

885 Nakadomari Onna-son Kunigami-
gun Okinawa

沖縄県国頭郡恩納村仲泊 885



9 Shima 島

(Seafood dish, Awamori)



TEL098-965-0987
890-2 Nakadomari Onna-son
Kunigami-gun Okianawa
沖縄県国頭郡恩納村仲泊 890-2



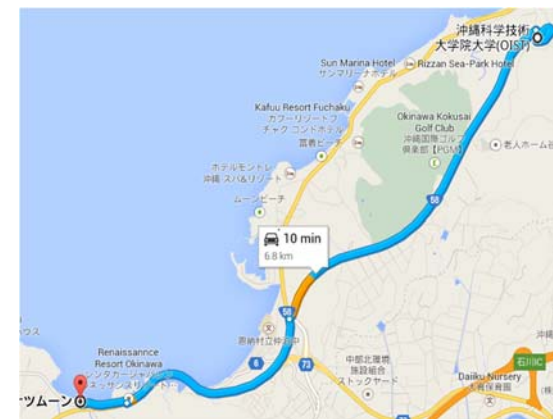
Seat 61, Cash (Yen only)
Credit card ✕
Vegetarian ✕ Allergy ✕
English menu ✕
OPEN 11:00~21:00 (LO 20:30)
Closed Tuesdays
Average price ¥1500~¥4000

10 Coconut Moon ココナツツムーン

(Tacos, Cocktail Bar)



TEL098-965-3601
3085 Yamada Onna-son Kunigami-gun
Okinawa
沖縄県国頭郡恩納村山田 3085



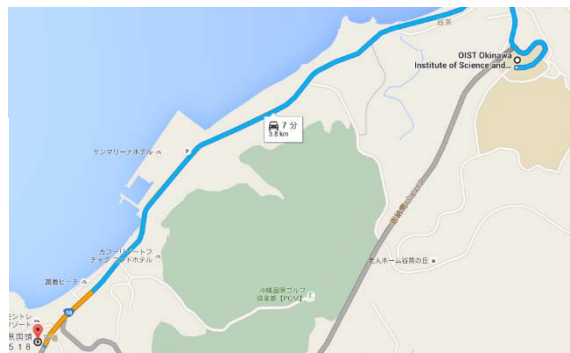
Seat 60
Cash (Yen only) Credit card ✕
Vegetarian ○ Allergy ✕
English menu ○
OPEN 12:00~3:00am (LO 2:00am)
Closed Tuesdays
Average Price ¥1000~¥2000

11 Steak house jam

(Steak, fish)



TEL 098-965-2626
1518 Fuchaku Onna-son Kunigami-gun
Okinawa
沖縄県国頭郡恩納村富着 1518



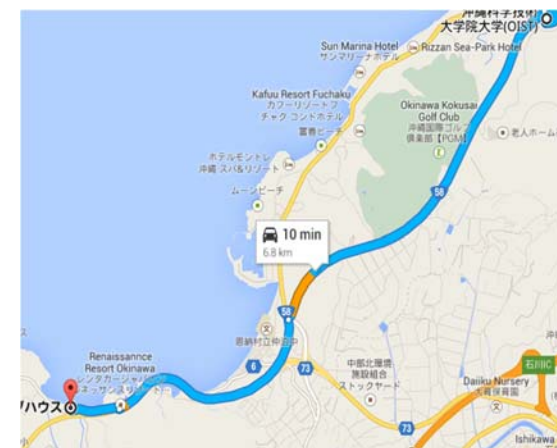
Seat 65, Cash (Yen only)
Credit card ○ Vegetarian ✕
Allergy ✕ English menu ○
OPEN Lunch 11:30 ~14:30
Dinner 17:00~24:00
Closed Tuesday and
Wednesday Lunch
Average price ¥1500~¥4000

12 Malibu House マリブハウス

(Steak, Meatloaf, Curry)



TEL 098-965-5496
3086-1 Yamada Onna-son kunigami-
gun Okinawa
沖縄県国頭郡恩納村山田 3086-1



Seat 48, Cash (Yen only)
Credit card ○ (AMEX JCB
Diners)
Vegetarian ✕ Allergy ✕
English menu ○
OPEN 11:30~22:00 (LO 21:30)
Open everyday
Average price ¥1500~¥2000

13 Karin 花梨

Located in ANA INTERCONTINENTAL MANZA BEACH RESORT(Cantonese buffet)



TEL 098-966-1211
2260 Seragaki onna-son Kunigami-gun
Okinawa 沖縄県国頭郡恩納村瀬良垣 2260



Seat 135, Cash (Yen only)
Credit card ○ Vegetarian ○
Allergy × English menu ○
OPEN 18:00-21:30
Closed Thursday
Average price ¥4000~¥5000

14 Shimabutaya しまぶた屋

(Shabu-shabu pork dish)



TEL 098-966-1450
6369-1 Onna Onna-son kunigami-gun
Okinawa
沖縄県国頭郡恩納村恩納 6369-1



Seat 42, Cash (Yen only)
Credit card ○
Vegetarian △ (salad or snack) Allergy ×
English menu ○
OPEN 17:00-24:00 (LO 23:00)
OPEN everyday
Average Price ¥3500~¥4000

15 Ryukyu no Ushi 琉球の牛

(Yakiniku-BBQ)



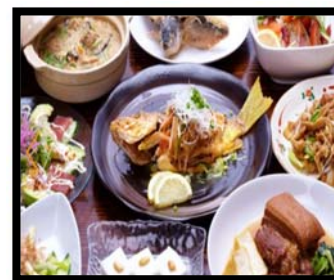
TEL 098-965-2233
909-2 Maeganeku Onna-son
Kunigami-gun Okinawa
沖縄県国頭郡恩納村前兼久 909-2



Seat 42, Cash (Yen only)
Credit card ○
Vegetarian × Allergy ×
English menu ○
OPEN Lunch 11:00-16:30
Dinner 17:00-23:30 (LO 23:00)
Open everyday
Average price ¥4900~¥6000

16 Ryukyu-tei 琉球亭

(Okinawan cuisine)



TEL 098-989-4991
1593-8 tancha onna-son Kunigami-gun
Okinawa prefecture
沖縄県国頭郡恩納村谷茶 1593-1



Seat 100, Cash (Yen only)
Credit card ×
Vegetarian × Allergy ×
English menu ×
OPEN 17:30-22:00
Open everyday
Average price ¥3000~¥4000

17 Gachimai がちまい (Grilled pork chop, Okinawan Dining)



TEL 098-964-6167
80 Maeganeku onna-son Kunigami-gun
Okinawa
沖縄県国頭郡恩納村前兼久 80



Seat 45
Cash (Yen only) Credit card ×
Vegetarian × Allergy ×
English menu ×
OPEN 18:00-1:00am (LO23:50)
Open everyday
Average price ¥2000~¥3000

18 Okinawan baru Beach Grill オキナワンバル BEACH グリル



(Okinawan Dining, sake)

TEL 098-989-8028
576-1 fuchaku Onna-son Kunigami-gun
Okinawa
沖縄県国頭郡恩納村前富着 576-1



Seat 24
Cash (Yen only) Credit card ○
Vegetarian × Allergy ×
English menu ○
OPEN 18:00-24:00 (LO 23:00)
Open everyday
Average price ¥2000~¥3000

19 Tonta no Shokutaku とん太の食卓

(Yakiniku All-you-can-eat 90 minutes)



TEL 098-966-8221
6165 onna Onna-son Kunigami-gun
Okinawa
沖縄県国頭郡恩納村恩納 6165



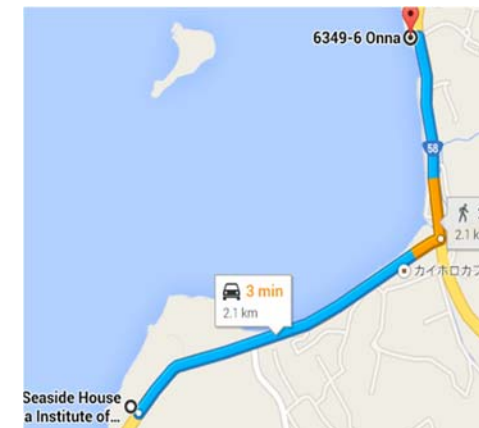
Seats 70
Cash (Yen only) Credit card ○
Vegetarian × Allergy ×
English menu ○
OPEN 17:00-22:00
Closed irregularly
Average price ¥2000 ~ ¥3000
Free transportation to hotel

20 On the Beach オンザビーチ

(Italian pasta, sea food)



TEL 098-966-2929
6349-6 Onna Onna-son Kunigami-gun
Okinawa
沖縄県国頭郡恩納村前兼久 6349-6



Seat 52
Cash (Yen only) Credit card ○
Vegetarian ○ Allergy ○
English menu ○
OPEN 11:30-23:00
Open Everyday
Average price ¥2000~¥3000

②1 Lu Soleil る・それいゆ

(Okinawa Italian cookery)



TEL 098-966-8517
1416-1 seragaki Onna-son Kunigami-gun Okinawa
沖縄県国頭郡恩納村瀬良垣 1416-1



Seat 56
Cash (Yen only) Credit card ×
Vegetarian × Allergy ×
English menu ×
OPEN 17:00-24:0 (L023:00)
Closed: Wednesday
Average price ¥2000~¥3000

②2 Casa La Tida カサラティータ

(Mediterranean cuisine)



TEL 098-982-5858
1329-2 Nakadomari Onna-son
Kunigami-gun Okinawa
沖縄県国頭郡恩納村仲泊 1329-2



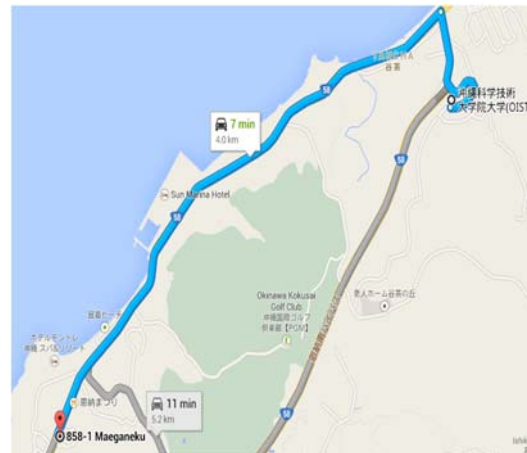
Seat 110
Cash (Yen only) Credit card ○
Vegetarian × Allergy ×
English menu ○
OPEN Lunch 11:30-15:00
17:30-24:00 (L023:00)
Closed: Wednesday
Average price ¥2000~¥3000

②3 Onna Tsubaki 恩納つばき

(Okinawan dinig, Awamori)



TEL 098-965-7705
858-1 Maekaneku Onna-son Kunigami-gun Okinawa
沖縄県国頭郡恩納村前兼久 858-1



Seat 40, Cash (Yen Only)
Credit card ○ Vegetarian ×
Allergy × English menu ○
OPEN 17:30-24:00 (LO 23:00)
Open every day
Average price ¥2000~¥4000

②4 Ta-mu 田芋

(taro-potato dish, Okinawan cuisine, sake)



TEL 098-964-6444
2081-1 Nakadomari Onna-son
Kunigami-gun Okinawa
沖縄県国頭郡恩納村仲泊 2081-1



Seat 60, Cash (Yen only)
Credit card ○
Vegetarian ○
Allergy ×
English menu ○
OPEN 12:00-23:00 (L022:00)
Open everyday
Average price ¥2000~¥3000

25 Grand line グランドライン (sports bar, sandwiches, beer, cocktails)



TEL 098-966-1173
123 Tancha Onna-son Kunigami-gun
Okinawa
沖縄県国頭郡恩納村谷茶 123



seat 24, Cash (Yen only)
Credit card ○
Vegetarian (able to request)
Allergy × English menu ×
OPEN 19:00-3:00am
Open everyday
Average price ¥2000~¥3000

26 Uraniwa うら庭



(Okinawan dining, steak, awamori, sake)

TEL 098-964-6601
256 fuchaku Onna-son Kunigami-gun
Okinawa
沖縄県国頭郡恩納村富着 256



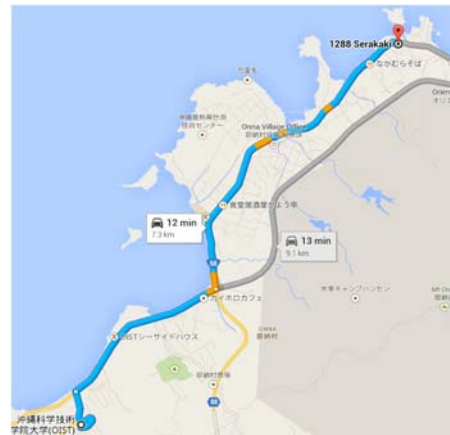
SEAT 140, Cash (Yen only)
Credit card ○ Vegetarian ×
Allergy × English menu ×
OPEN 18:00-24:00
Closed: Thursday
Average price ¥3000 ~ ¥4000
Okinawan live stage

27 Yanbaru やんばる



(Okinawan dining sake, awamori)

TEL 098-966-2939
1288 Seragaki Onna-son Kunigami-gun
Okinawa
沖縄県国頭郡恩納村瀬良垣 1288

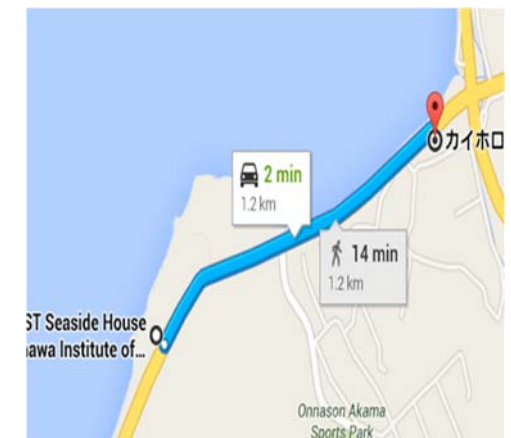


Seat 50, Cash (Yen only)
Credit card ○ Vegetarian ×
Allergy × English menu ×
OPEN 17:00-23:00
Closed Tuesday
Average Price ¥3000~¥4000

28 Kaihoro cafe カイホロカフェ (Pan cake, coffee)



TEL 098-955-2597
6978-1 Onna Onna-son Kunigami-gun
Okinawa
沖縄県国頭郡恩納村恩納 6978-1



Seat 13, Cash (Yen only)
Vegetarian ○ Allergy ×
English menu ○
OPEN 7:00-16:00
Closed Friday
Average Price ¥3000~¥4000

29 Dokadoka 土花土花



Seat 50, Cash (Yen only)

Credit card ○

Vegetarian × Allergy ×

English menu ○

OPEN 11:00-20:00pm

Closed Sunday

Average price ¥1000~¥2000

(Pizza, taco rice)

TEL 098-965-1666

243-1 Maeganeku Onna-son Kunigami-gun Okinawa

沖縄県国頭郡恩納村前兼久 243-1



30 Sara no ue no Shizenn il Gastro Sara 皿の上の自然



Seat 36, Cash (Yen only)

Credit card ○

Vegetarian & Allergy (able to request in advance)

English menu ○

OPEN 12:00-22:00

Closed Every 2nd & 4th Monday

Average price ¥1500~¥5000

(Pasta, Salad, Curry rice)

TEL 098-987-7688

466-7 Maeganeku Onna-son Kunigami-gun Okinawa

沖縄県国頭郡恩納村前兼久 466-7



Try Okinawan cuisine and sake!

Okinawan-soba noodle 沖縄そば



Okinawa Soba is a Okinawan traditional noodles with pork or bonito flake based soup, *sōki* (pork ribs), *kamaboko* (Japanese fish sausage) and red pickled ginger. Okinawa soba is an all-time favourite of young and old.

Awamori 泡盛



Awamori is traditional Okinawan *sake* made from Thai rice, which contains typically 30–43% alcohol. Its history dates back to the 15th century. You can enjoy it straight, on-the-rocks or in a cocktail.

Goya-champuru ゴーヤチャンプル



Goya-Champuru is a stir-fry dish of *goya* (bitter melon) and tofu. Rich in vitamins, it is good for your health, especially for the skin. It also help you recover from Summer weariness!

Orion Beer



Orion Beer is the most popular domestic beer in Okinawa made from mountain spring water. It is loved for its refreshing and crisp taste.

Enjoy finding your favorites!